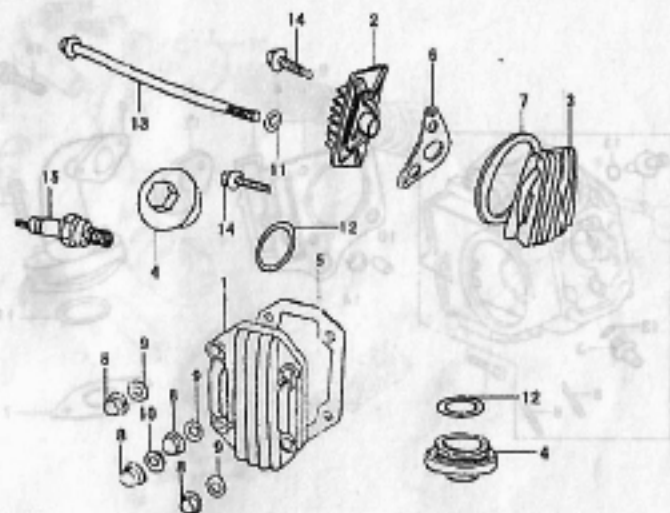


## E-1 气缸头盖 Cylinder Head Cover

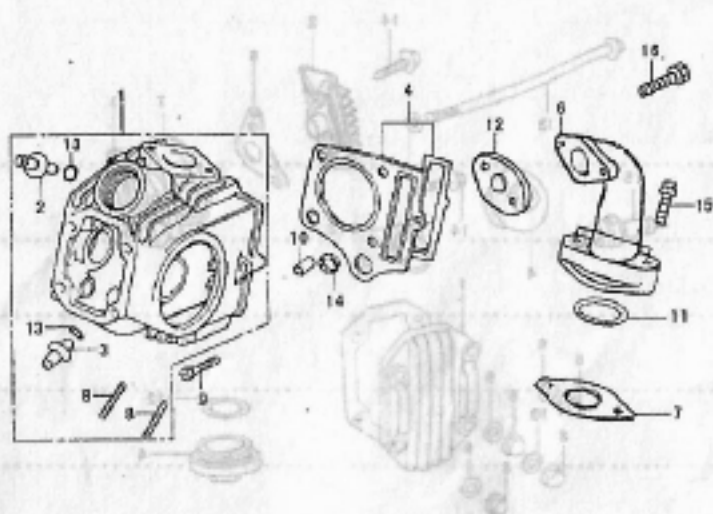
E-1 气缸头盖 Cylinder Head Cover



序号 Ref. No.	零部件代号 Part No.	零部件名称	Description	数量 Quantity	备注 Remark
1	1231001-107E-H0	气缸头盖	Upper cover, cylinder head	1	
2	1231004-107E-H0	气缸头右盖	Cover, R cylinder head side	1	
3	1231005-107E-H0	气缸头左盖	Cover, L cylinder head side	1	
4	1231006-107E-H0	气门盖	Cover, valve chamber	2	
5	1231002-107E-H0	气缸头盖密封垫	Gasket, cylinder head upper cover	1	
6	1231007-107E-H0	气缸头右盖密封垫	Gasket, R, cylinder head cover	1	
7	1231008-107E-H0	气缸头左盖密封垫	Gasket, L, cylinder head cover	1	
8	1231013-107E-H0	盖形螺母 M7	Nut M7	4	
9	1231011-107E-H0	气缸头铁垫圈	Washer 7(iron)	3	
10	1231012-107E-H0	气缸头铜垫圈	Washer 7(copper)	1	
11	1221006-107E-H0	气缸头长螺栓垫	Washer	1	
12	1231009-107E-H0	气门盖 O 形密封圈 31.5x3.55	O-ring 31.5x3.55	2	
13	1221005-107E-H0	气缸头长螺栓 M6x110	Bolt M6x1.0	1	
14	GB/T 5787-1986	螺栓 M6x20	Bolt M6x20	2	
15	3421000-107E-H0	火花塞 1137	Spark plug 1137	1	

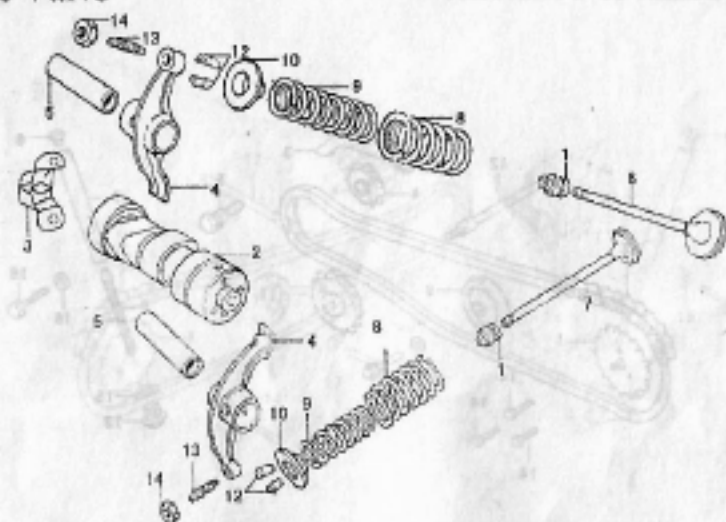
## E-2 气缸头 Cylinder Head

Cylinder Head Cover



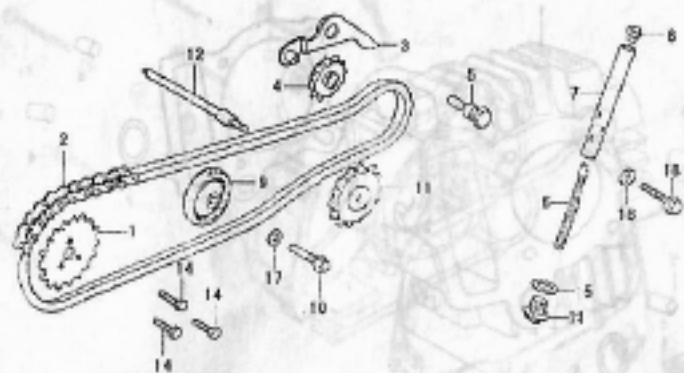
序号 Ref. No.	零部件代号 Part No.	零部件名称	Description	数量 Quantity
1	1221000-107E-H0	气缸头组合	Cylinder head comp	1
2	1221002-107E-H0	进气门导管	In. valve guide	1
3	1221003-107E-H0	排气门导管	Ex. valve guide	1
4	1222000-107E-H0	气缸头密封垫组件	Gasket, cylinder head	1
6	1731004-107E-H0	进气管	Inlet pipe	1
7	1731001-107E-H0	隔热密封垫	Heat insulating ring	1
8	1221010-107E-H0	排气口双头螺栓 M6×32	Stud bolt M6×32	2
9	GB/T 5787-1986	螺栓 M6×23	Bolt M6×23	1
10	1221015-107E-H0	气缸头定位销 9.5	Bush 9.5	1
11	1731002-107E-H0	O形密封圈 27×2.0	O-ring 27×2.0	1
12	1731003-107E-H0	进气管密封垫	Gasket, inlet pipe	1
13	1221004-107E-H0	导管 O形圈 9×1.6	O-ring 9×1.6	2
14	1222002-107E-H0	矩形密封圈 9×1.35	Gasket, rectangle rubber	1
15	GB/T 5787-1986	六角法兰螺栓 M6×28	Bolt M6×28	2
16	GB/T 5787-1986	六角法兰螺栓 M6×22	Bolt M6×22	2

## E-3 凸轮轴、气门 Camshaft &amp; Valve



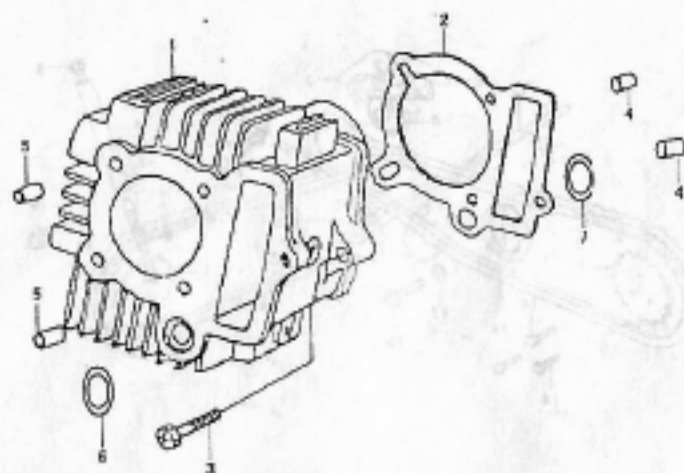
序号 Ref. No.	零部件代号 Part No.	零部件名称	Description	数量 Quantity	备注 Remark
1	1472000-107E-H0	挡油罩	Valve stem seal	2	
2	1411000-107E-H0	凸轮轴组件(带减压阀)	Camshaft(with relief valve)	1	
3	1413000-107E-H0	凸轮轴限位板	Spacing plate	1	
4	1441001-107E-H0	气门摇臂	Rocker arm, valve	2	
5	1441005-107E-H0	气门摇臂轴	Shaft, Valve rocker arm	2	
6	1471001-107E-H0	进气门	In valve	1	
7	1471002-107E-H0	排气门	Ex. valve	1	
8	1471007-107E-H0	气门外弹簧	Valve outer spring	2	
9	1471008-107E-H0	气门内弹簧	Valve inner spring	2	
10	1471003-107E-H0	气门弹簧座	Valve spring retainer	2	
12	1471004-107E-H0	气门锁夹	Valve cotter	4	
13	1441002-107E-H0	气门间隙调整螺钉	Adjusting screw, valve clearance	2	
14	1441003-107E-H0	气门间隙调整螺母	Adjusting nut, valve clearance	2	

E-4 凸轮链条、张紧器 Timing Chain & Tensioner



序号 Ref. No.	零部件代号 Part No.	零部件名称	Description	数量 Quantity	备注 Remark
16	GB/T 97.1-1985	垫圈 6	Washer 6	1	
17	GB/T 97.1-1985	垫圈 8	Washer 8	1	
18	GB/T 5787-1986	六角法兰螺栓 M6×18	Hexagon flange bolt M6×18	1	

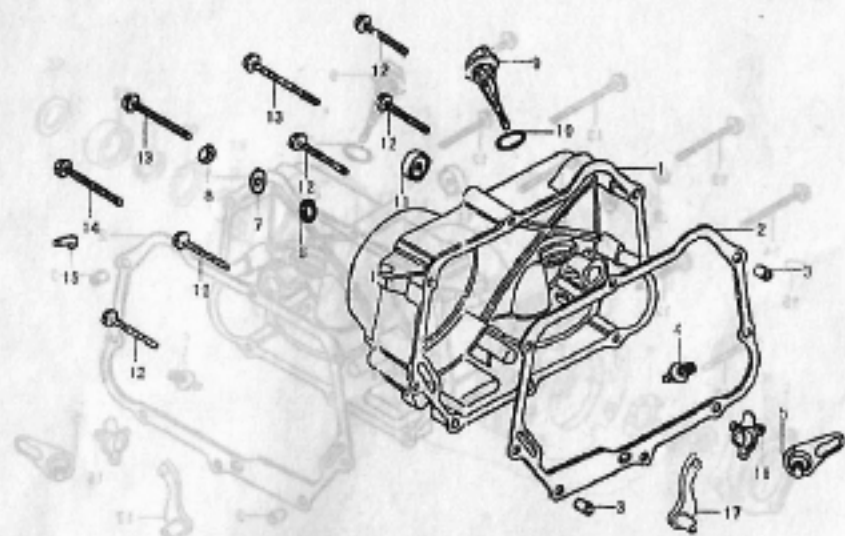
## E-5 气缸. Cyliner



序号 Ref. No.	零部件代号 Part No.	零部件名称	Description	数量 Quantity
1	1211001-107E-H0	气缸体	Cylinder block	1
2	1211002-107E-H0	气缸体密封垫	Gasket, cylinder block	1
3	GB/T 5787-1986	螺栓 M6×23	Bolt M6×23	1
4	1211003-107E-H0	气缸体定位销 8×12	Dowel 8×12	2
5	1221015-107E-H0	气缸头定位销 8×14	Dowel 8×14	2
6	1212001-107E-H0	矩形密封圈 AΦ14×18.2×2.5	Rectangle ring A	1
7	1212002-107E-H0	矩形密封圈 BΦ11.5×16×2.5	Rectangle ring B	1

## E-6 右曲轴箱盖 Right Crankcase Cover

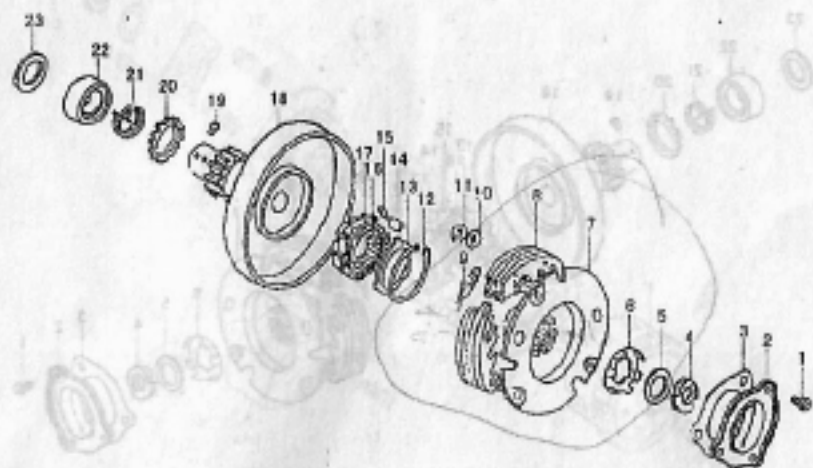
E-6 右曲轴箱盖 Right Crankcase Cover



序号 Ref. No.	零部件代号 Part No.	零部件名称 Description	数量 Quantity	备注 Remark
1	1131001-107E-H0	右曲轴箱盖	1	
2	1131002-107E-H0	右曲轴箱盖密封垫	1	
3	1131004-107E-H0	右曲轴箱盖定位销 8×12	2	
4	2183001-107E-H0	离合器调整螺栓	1	
5	2181000-107E-H0	离合器凸轮板组件	1	
6	2183003-107E-H0	调整螺栓 O 形圈	1	
7	GB/T 97.1-1985	垫圈 8	1	
8	GB/T 6170-2000	螺母 M8	1	
9	1561001-107E-H0	机油尺	1	
10	1561002-107E-H0	机油尺 O 形圈	1	
11	2713000-107E-H0	起动轴油封	1	
12	GB/T 5787-1986	螺栓 M6×40	5	
13	GB/T 5787-1986	螺栓 M6×65	2	
14	GB/T 5787-1986	螺栓 M6×80	1	
15	3571001-107E-H0	高压线头	1	

## E-7 初级离合器 Primary clutch

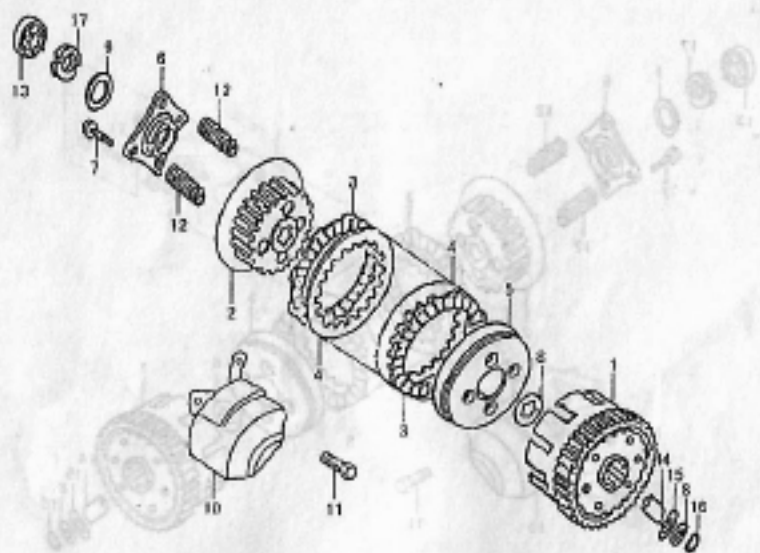
## E-7 初级离合器 Primary clutch



序号 Ref. No.	零部件代号 Part No.	零部件名称 Description	数量 Quantity	备注 Remark
1	GB/T 819.1-2000	十字槽沉头螺钉 M5×8	3	
2	2113001-107E-H0	初级离合器盖	1	
3	2113002-107E-H0	初级离合器密封垫	1	
4	2113004-107E-H0	紧固螺母 M14×1.0	1	
5	2113006-107E-H0	锁紧平垫圈	1	
6	2113005-107E-H0	锁紧垫圈	1	
7	2111000-107E-H0	初级离合器主动盘	1	
8	2112000-107E-H0	初级离合器蹄块	1	
9	2112001-107E-H0	初级离合器弹簧	3	
10	2113007-107E-H0	止推垫圈	3	
11	2113009-107E-H0	开口挡圈	3	
12	2133005-107E-H0	超级离合器挡圈 45	1	
13	2133004-107E-H0	超级离合器垫圈 30	1	
14	2133003-107E-H0	超级离合器滚柱 5×8	6	
15	2133002-107E-H0	单向固定弹簧	6	

## E-8 主离合器 Main Clutch

E-8 主离合器 Main Clutch

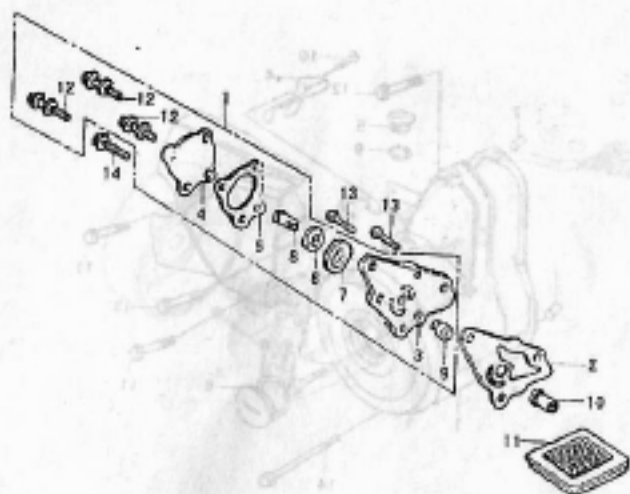


序号 Ref. No.	零部件代号 Part No.	零部件名称	Description	数量 Quantity	备注 Remark
1	2210000-107E-H0	离合器主动盘组件	Clutch drive plate	1	
2	2231000-107E-H0	离合器从动盘组合	Gear driven	1	
3	2214000-107E-H0	离合器主动摩擦片	Disk, friction	1	
4	2231001-107E-H0	离合器从动摩擦片	Plate, driven	4	
5	2231002-107E-H0	离合器压盘	Plate, drive	3	
6	2231004-107E-H0	离合器端盘	Den plate	1	
7	GB/T 5783-2000	螺栓 M6×22	Bolt M6×22	1	
8	2232002-107E-H0	离合器花键垫圈 17	Spline, washer 17	4	
9	2232007-107E-H0	离合器锁紧垫圈(碟形)	Washer, B, lock	1	
10	2232008-107E-H0	离合器隔油盘	Oil insulating	1	
11	GB/T 5783-2000	螺栓 M6×16	Bolt M6×16	1	
12	2231005-107E-H0	离合器弹簧	Spring	2	
13	2233000-107E-H0	离合器轴承 100	Bearing	4	
14	2232003-107E-H0	离合器衬套	Collar	1	
15	2232005-107E-H0	离合器定位环	Weight fixing ring	1	



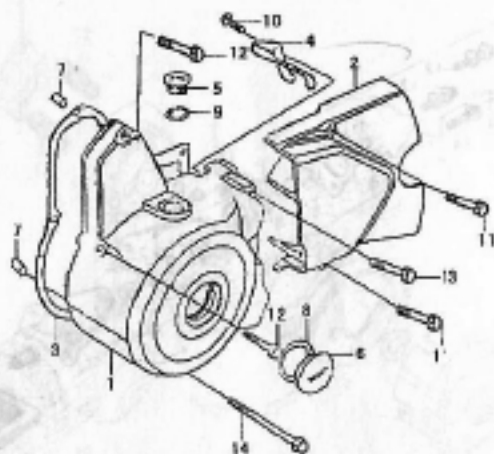
9 油泵 Oil Pump

1-10 油室箱盖 Oil Chamber Cover

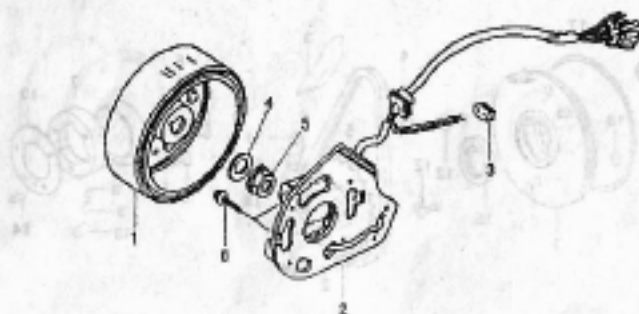


号 No.	零部件代号 Part No.	零部件名称	Description	数量 Quantity	备注 Remark
1	1511000-107E-H0	机油泵组件	Oil pump comp	1	
2	1511011-107E-H0	机油泵密封垫	Gasket, oil pump block	1	
3	1511001-107E-H0	机油泵体	Oil pump block	1	
4	1511013-107E-H0	机油泵盖	Cover, oil pump	1	
5	1511004-107E-H0	机油泵盖密封垫	Gasket, oil pump cover	1	
6	1511006-107E-H0	机油泵内转子	Oil pump inner rotor	1	
7	1511007-107E-H0	机油泵外转子	Oil pump outer rotor	1	
8	1511008-107E-H0	机油泵轴	Shaft, oil pump	1	
9	1511009-107E-H0	机油泵轴套	Oil pump shaft sleeve	1	
10	1511012-107E-H0	机油泵齿轮轴套	Oil pump sprocket shaft sleeve	1	
11	1545000-107E-H0	机油过滤网组件	Oil filter screen	1	
12	GB/T 5783-2000	螺钉 M4×10	Screw M4×10	1	
13	GB/T 5783-2000	螺钉 M6×16	Screw M4×16	3	
14	GB/T 5783-2000	螺钉 M6×22	Screw M6×22	2	
				1	

## E-10 左曲轴箱盖 Left Crankcase Cover



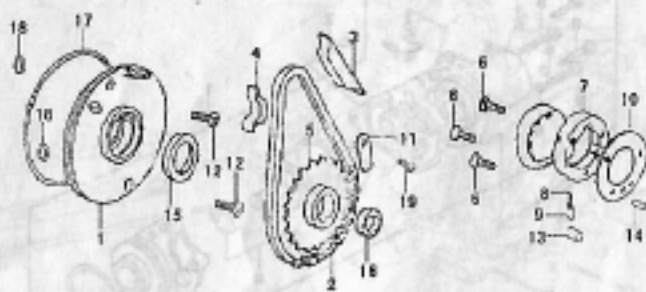
序号 Ref. No.	零部件代号 Part No.	零部件名称	Description	数量 Quantity	备注 Remark
1	1442001-107E-H0	左曲轴箱前盖	L, crankcase cover front part	1	1
2	1141001-107E-H0	左曲轴箱后盖	L, crankcase cover rear part	1	2
3	1142006-107E-H0	左曲轴箱盖密封垫	L,crankcase cover gasket	1	3
4	3191003-107E-H0	磁电机线夹	Magneto cable fixing plate	1	4
5	1142003-107E-H0	磁电机帽(小视孔盖)	Magneto cap(small sight hole)	1	5
6	1142002-107E-H0	螺帽(大视孔盖)	Cap(big sight hole)	1	6
7	1141004-107E-H0	定位销 8×12	Dowel 8×12	2	7
8	1142004-107E-H0	O形密封圈 27×2.0	O-ring 27×2.0	1	8
9	1142005-107E-H0	O形密封圈 13.8×2.5	O-ring 13.8×2.5	1	9
10	GB/T 5787-1986	螺栓 M6×16	Bolt M6×16	1	10
11	GB/T 5787-1986	螺栓 M6×25	Bolt M6×25	2	11
12	GB/T 5787-1986	螺栓 M6×32	Bolt M6×32	2	12
13	GB/T 5787-1986	螺栓 M6×50	Bolt M6×50	1	13
14	GB/T 5787-1986	螺栓 M6×70	Bolt M6×70	1	14



序号 F. No.	零部件代号 Part No.	零部件名称 Description	数量 Quantity	备注 Remark
1	3111000-107E-H0	磁电机转子组合 Rotor assy	1	
2	3112000-107E-H0	磁电机定子组合 Base assy	1	
3	3571006-107E-H0	档位开关固定环 Neutral switch ring	1	
4	3191005-107E-H0	磁电机锁紧垫圈 10 Gasket 10	1	
5	3191006-107E-H0	磁电机锁紧螺母 M10 Nut 10	1	
6	GB/T 5783-1986	螺栓 M6×10 Bolt M6×10	2	

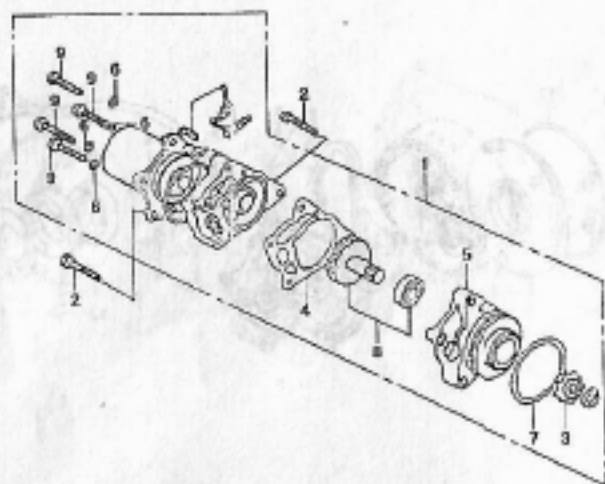
## E-12 起动离合器 Starting Clutch

E-13 电动机 Motor

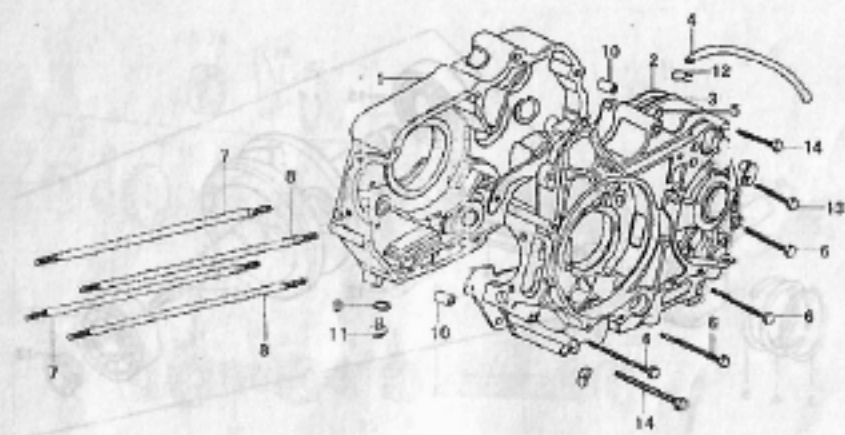


序号 Ref. No.	零部件代号 Part No.	零部件名称 Description	数量 Quantity	备注 Remark
16	2823000-107E-H0	起动链轮油封 19×30×5	1	
17	2824001-107E-H0	隔油盘 O 形圈	1	
18	2824002-107E-H0	隔油盘螺栓 O 形圈	2	
19	GB/T 5783-2000	螺栓 M6×10	1	

## E-13 起动机 Starting Motor



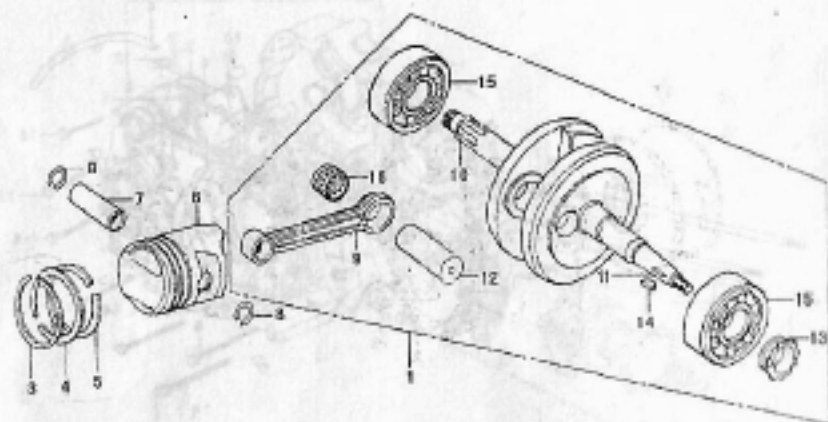
序号 Ref. No.	零部件代号 Part No.	零部件名称	Description	数量 Quantity	备注 Remark
1	3470000-107E-H0	起动机总成	Starting motor comp	1	
2	GB/T 5783-2000	六角螺栓 M6×50	Hexagon bolt M6×50	3	
3	3471001-107E-H0	小链轮	Sprocket	1	
4	3471002-107E-H0	密封垫	Gasket	1	
5	3471003-107E-H0	前壳体	Cover, FR	1	
6	3476002-107E-H0	起动机螺栓垫圈 5	Motor comp 5	1	
7	3471004-107E-H0	O形密封圈	O-ring	1	
8	3472000-107E-H0	齿轮组件	Gear comp	1	
9	3476001-107E-H0	起动机螺栓 M5×30	Bolt M5×30	4	



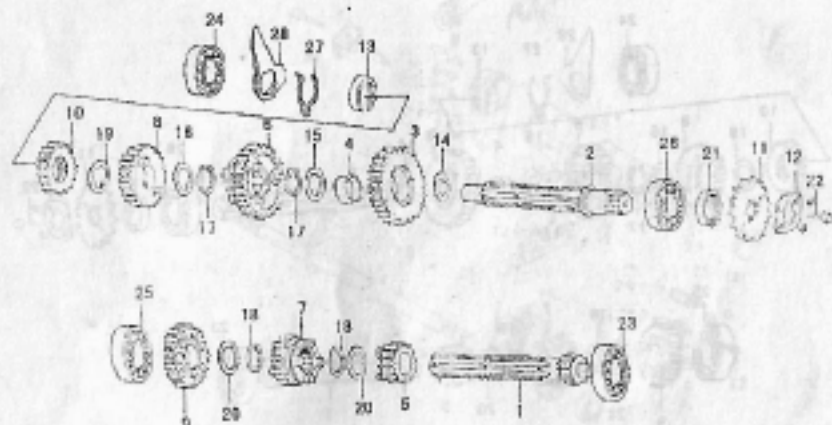
序号 Ref. No.	零部件代号 Part No.	零部件名称	Description	数量 Quantity	备注 Remark
1	1110000-107E-H0	右曲轴箱体	R, crankcase block	1	
2	1111001-107E-H0	曲轴箱密封垫	Gasket, crankcase	1	
3	1120000-107E-H0	左曲轴箱体	L, crankcase block	1	
4	1123001-107E-H0	通气管	Breather tube	1	
5	1123003-107E-H0	曲轴箱排气嘴	Clamper, overflow pipe	1	
6	GB/T 5787-1986	六角法兰螺栓 M6×65	Hex flange bolt M6×65	4	
7	1211004-107E-H0	气缸双头螺栓 A	Cylinder stud bolt A	2	
8	1211005-107E-H0	气缸双头螺栓 B	Cylinder stud bolt B	2	
9	1121002-107E-H0	放油螺塞垫圈 12	Washer 12	1	
10	1111002-107E-H0	曲轴箱定位销 10×14	Dowel pin 10×14	2	
11	1121001-107E-H0	放油螺塞 M12×1.5	Oil drain plug M12×1.5	1	
12	1123002-107E-H0	曲轴箱排气管管夹	Clip C9	1	
13	GB/T 5787-1986	六角法兰螺栓 M6×45	Hex flange bolt M6×45	1	
14	GB/T 5787-1986	六角法兰螺栓 M6×60	Hex flange bolt M6×60	2	

## E-15 曲轴、活塞 Crankshaft &amp; Piston

E-14 曲轴、活塞 Crankshaft &amp; Piston



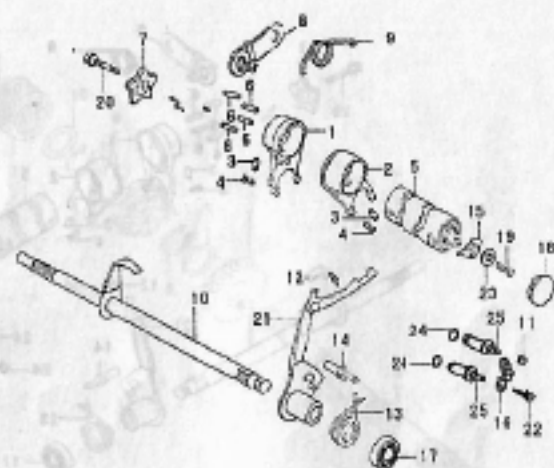
序号 Ref. No.	零部件代号 Part No.	零部件名称	Description	数量 Quantity	备注 Remark
1	131000-107E-H0	曲柄连杆组件	Crankshaft comp. connecting rod	1	
3	1331001-107E-H0	活塞环(一)	Piston ring(the 1st ring)	1	
4	1331002-107E-H0	活塞环(二)	Piston ring(the 2nd ring)	1	
5	1332000-107E-H0	油环组合	Piston ring(oil)	1	
6	1321001-107E-H0	活塞	Piston	1	
7	1321002-107E-H0	活塞销	Piston pin	1	
8	1321003-107E-H0	活塞销挡圈	Circlip, piston pin	2	
9	1321004-107E-H0	曲柄连杆	Connecting rod	1	
10	1311001-107E-H0	右曲柄	R. crankshaft comp	1	
11	1311002-107E-H0	左曲柄	L. crankshaft comp	1	
12	1311005-107E-H0	曲柄连接销	Crankshaft pin	1	
13	1311006-107E-H0	正时主动链轮	Timing drive sprocket	1	
14	1311003-107E-H0	半圆键	Woodruff key	1	
15	1317000-107E-H0	曲轴轴承	Bearing	2	
16	1312000-107E-H0	连杆大头轴承 KS253013	Needle bearing	1	



序号 Ref. No.	零部件代号 Part No.	零部件名称	Description	数量 Quantity	备注 Remark
1	2361001-107E-H0	主轴 11T	Transmission main shaft 11T	1	
2	2371001-107E-H0	副轴 T	Transmission counter shaft	1	
3	2371002-107E-H0	副轴一档齿轮 36T	Countershaft 1st gear 36T	1	
4	2371003-107E-H0	副轴一档齿轴套 20×19	Bush 20×19	1	
5	2361002-107E-H0	主轴二档齿轮 16T	Main shaft 2nd gear 16T	1	
6	2371004-107E-H0	副轴二档齿轮 31T	Countershaft 2nd gear 31T	1	
7	2361003-107E-H0	主轴三档齿轮 20T	Main shaft 3rd gear 20T	1	
8	2371005-107E-H0	副轴三档齿轮 27T	Countershaft 3rd gear 27T	1	
9	2361004-107E-H0	主轴四档齿轮 23T	Main shaft 4th gear 23T	1	
10	2371006-107E-H0	副轴四档齿轮 24T	Countershaft 4th gear 24T	1	
11	2374001-107E-H0	主动链轮	Drive sprocket	1	
12	2374002-107E-H0	链轮固定板	Fixing plate	1	
13	2711017-107E-H0	止推垫圈 14	Thrust washer 14	1	
14	2372001-107E-H0	副轴止推垫圈 17	Thrust washer 17	1	
15	2372004-107E-H0	副轴一档齿轴套 20	Washer, Countershaft 1st gear 20	1	



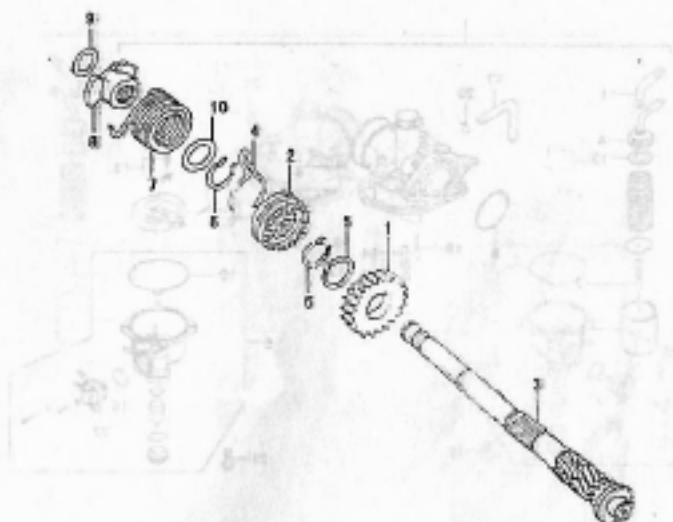
## E-17 变速机构 Gear Shift



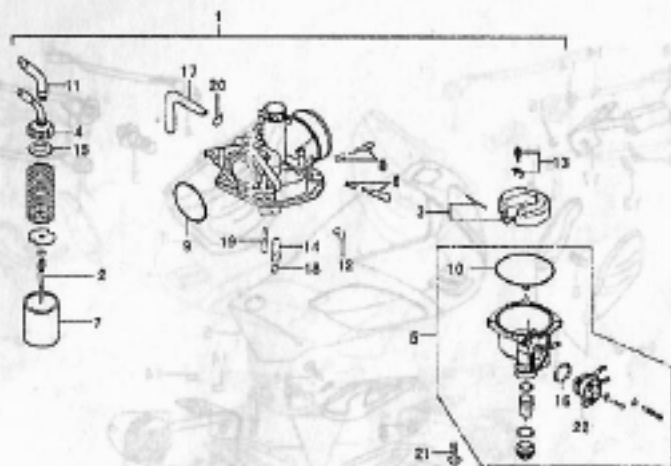
序号 Ref. No.	零部件代号 Part No.	零部件名称	Description	数量 Quantity	备注 Remark
1	2441001-107E-H0	拨叉(一)	Gearshift fork 1	2	
2	2441002-107E-H0	拨叉(二)	Gearshift fork 2	2	
3	2421005-107E-H0	拨叉导向销	Guide pin	2	
4	2421006-107E-H0	拨叉导向销卡簧	Circlip, gearshift fork guide pin	1	
5	2421001-107E-H0	变速鼓	Gearshift cam	1	
6	2421007-107E-H0	变速鼓拨销	Pin	4	
7	2421010-107E-H0	变速鼓限位板	Stopper	1	
8	2431000-107E-H0	变档定位板组合	Locating plate group	1	
9	2431003-107E-H0	变档定位板弹簧	Spring, locating plate	1	
10	2411000-107E-H0	变档轴组合	Gearshift shaft comp	1	
11	3571005-107E-H0	档位开关帽	Cup, gearshift switch	1	
12	2412002-107E-H0	变档拨板弹簧	Gearshift lever return spring	1	
13	2413001-107E-H0	变档轴复位弹簧	Gearshift lever tension spring	1	
14	2413003-107E-H0	复位弹簧定位螺栓	Bolt, return spring fixing	1	
15	3571003-107E-H0	档位开关动触点	Gearshift switch movable contact	1	

## E-18 反冲启动机构 Kick Starter

E-18 反冲启动机构 Kick Starter

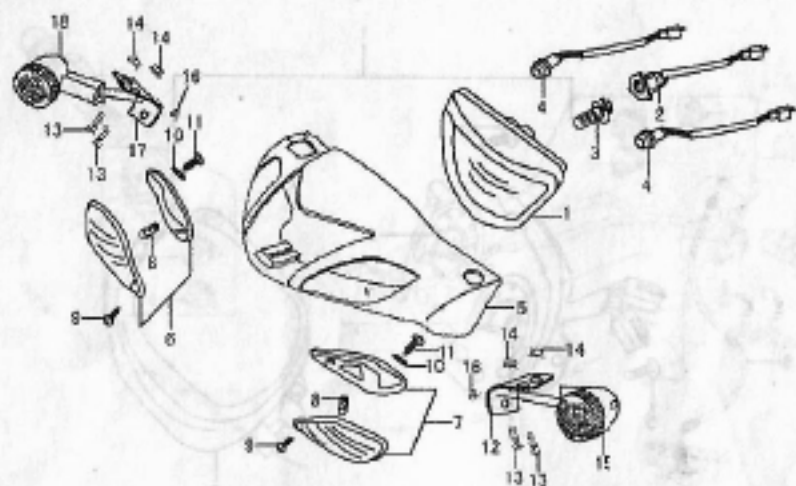


序号 Ref. No.	零部件代号 Part No.	零部件名称	Description	数量 Quantity	备注 Remark
1	2711002-107E-H0	启动齿轮	Kick starter gear	1	
2	2711003-107E-H0	启动棘轮	Starter ratchet	1	
3	2711001-107E-H0	启动轴	Kick starter axle	1	
4	2711004-107E-H0	启动棘轮回位弹簧	Spring	1	
5	2711017-107E-H0	止推垫圈 20	Thrust washer 20	1	
6	2711014-107E-H0	启动轴限位卡簧 20	Circlip 20	2	
7	2711010-107E-H0	启动轴回位弹簧	Kick starter return spring	1	
8	2711009-107E-H0	启动轴弹簧座	Kick stater axle spring seat	1	
9	2711013-107E-H0	启动轴弹簧座卡簧 16	Circlip 16	1	
10	GB/T 97.3-2000	垫圈 17	Washer 17	1	



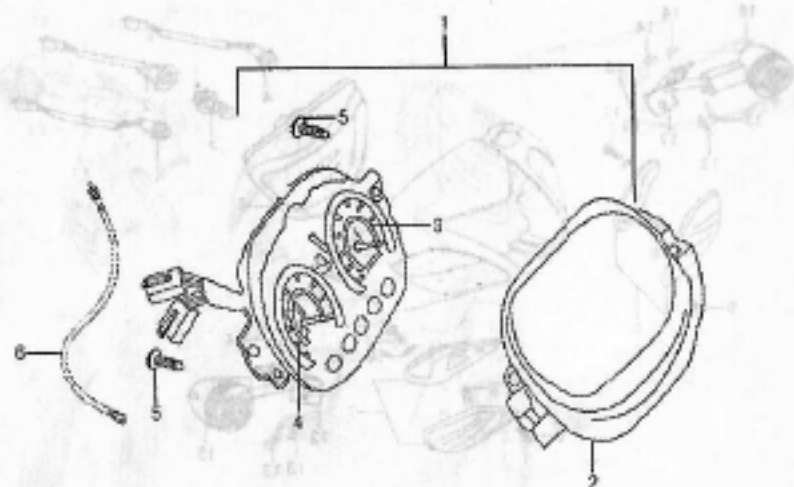
序号 Ref.No.	零部件代号 Part No.	零部件名称	Description	数量 Quantity	备注 Remark
16	1612011-625B-00	油开关 O 形圈	O-ring, fuel switch comp	1	
17	1612008-625B-00	化油器溢流管	Vent rubber tube	1	
18	1611024-625B-00	主量孔	Main jet	1	
19	1611028-625B-00	怠速泡沫喷管	Idle jet	1	
20	1612009-625B-00	溢流管管夹	Clip	1	
21	GB/T 5787-1986	螺钉 M4x18	Screw M4x18	2	
22	1612010-625B-00	油开关	Fuel switch comp	1	

F-1 前照灯总成 Headlight Assy



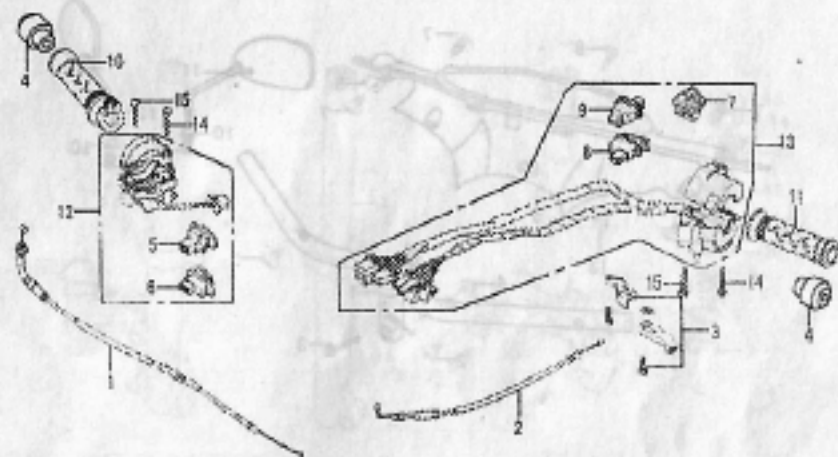
序号 Ref. No.	零部件代号 Part No.	零部件名称	Description	数量 Quantity	备注 Remark
16	GB/T 6177-1986	螺母 M5	Nut M5	2	
17	3361001-607E-10	前右转向灯支架	Bracket, R	1	
18	361001-607E-10	前右转向灯	Front Right Turning Light	1	

# F-2 仪表总成 Meters



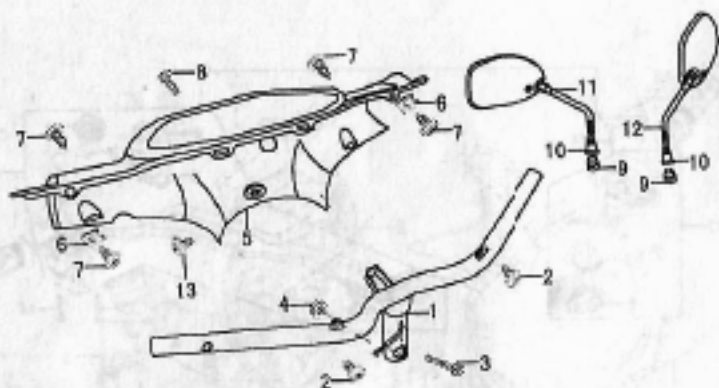
序号 Ref. No.	零部件代号 Part No.	零部件名称	Description	数量 Quantity	备注 Remark
1	3700000-507-00	仪表总成	Meter Assembly	1	
2	3793001-507-00	仪表上罩	Lens, Meter	1	
3	3710000-507-00	里程表组件	Odometer	1	
4	3720000-507-00	转速表组件	Speedometer	1	
5	GB/T 845-1985	螺钉 ST4.8×12	Screw ST4.8×12	2	
6	4670000-625B-10	里程表软轴	Flexible Cable, Odometer	1	

F-3 握把、开关、拉索 Handlebar, Switch & Cable



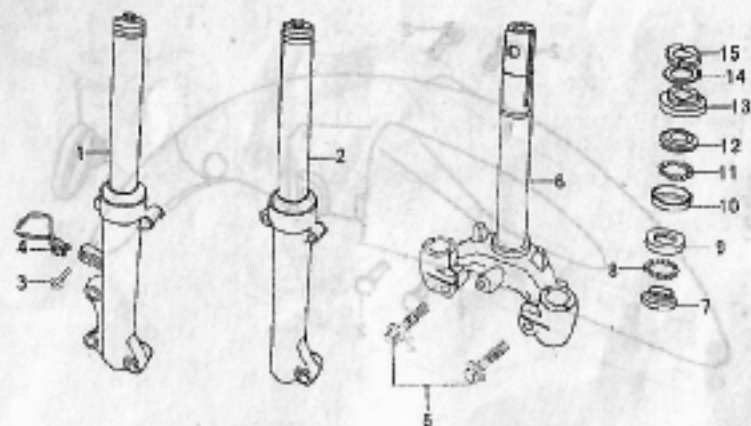
序号 Ref. No.	零部件代号 Part No.	零部件名称	Description	数量 Quantity	备注 Remark
1	4631001-625A-20	油门拉索 (1)	Cable, throttle (1)	1	
2	4632000-607B-30	阻风门拉索	Cable, choke	1	
3	3592001-616-10	阻风门拉索手柄	Choke cable lever	1	
4	4713001-625A-00	方向把平衡块组合	Balance comp. handle bar	1	
5	3512000-616-10	照明开关组件	Lighting switch	1	
6	3513000-616-10	启动开关组件	Starter switch	1	
7	3521000-616-10	远近光开关组件	Dimmer switch	1	
8	3533000-616-10	喇叭开关组件	Horn switch	1	
9	3522000-616-10	转向灯开关组件	Winker switch	1	
10	4730000-625A-00	油门握把	Throttle grip	1	
11	4741000-625A-00	左握把	Grip, LH	1	
12	3510000-616-10	右手把开关	Switch assembly, RH	1	
13	3520000-616-10	左手把开关	Switch assembly, LH	1	
14	GB/T 818-2000	螺钉 M5×20	Screw M5×20	2	
15	GB/T 818-2000	螺钉 M5×25	Screw M5×25	2	

F-4 方向把、前照灯护罩 Handlebars & Head Cover



序号 Ref. No.	零部件代号 Part No.	零部件名称	Description	数量 Quantity	备注 Remark
1	4711004-502-30	方向把管	Steering bar	1	
2	GB/T 845-1985	十字自攻螺钉 M4.8×12	Self-tapped screw ST4.8×12	2	
3	GB/T 5787-1986	螺栓 M10×1.25×50	Bolt M10×1.25×50	1	
4	GB/T 6187-2000	螺母 M10×1.25	Nut M10×1.25	1	
5	4311002-616-00	仪表护罩	Hood, meter	1	
6	ZBT31004-87	簧片螺母 M5	Nut M5	2	
7	GB/T 845-1985	十字自攻螺钉 M4.2×20	Self-tapped screw ST4.2×20	4	
8	9111014-625B-00	十字带垫螺栓 M5×16	Screw M5×16	1	
9	5851003-625A-00	后视镜锁紧螺母	Lock nut	2	
10	5851004-625A-00	后视镜护套	Boot, rear mirror	2	
11	5851000-625A-00	右后视镜	Rear view mirror, R	1	
12	5852000-625A-00	左后视镜	Rear view mirror, L	1	
13	GB/T 845-1985	十字自攻螺钉	Self-tapped screw ST4.8×12	2	

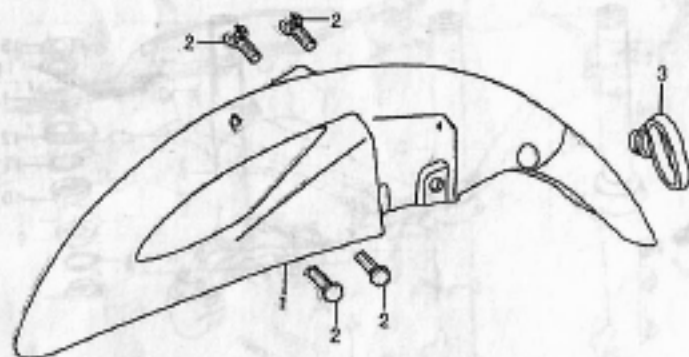
# P-5 方向柱总成 Steering Stem Assy



序号 Ref. No.	零部件代号 Part No.	零部件名称	Description	数量 Quantity	备注 Remark
1	5240000-625B-00	前右减震器	Front Shock Absorber,RH	1	
2	5250000-625B-00	前左减震器	Front Shock Absorber,LH	1	
3	GB/T 5787-1986	螺栓 M6×12	Bolt M6×12	1	
4	4111013-625A-00	线夹	Line Clamp	1	
5	GB/T 5787-1986	螺栓 M10×1.25×32	Bolt M10×1.25×32	2	
6	5091000-625A-00	方向柱组件	Steering stem comp	1	
7	5171004-625A-00	下轴承下盖	Race, bottom cone	1	
8	5171006-709-00	下轴承钢球	Ball, bottom bearing	23	
9	5171003-625A-00	下轴承上盖	Upper cover, bottom bearing	1	
10	5171002-625A-00	上轴承下盖	Lower race, top bearing	1	
11	5171005-501-00	上轴承钢球	Ball, top bearing	19	
12	5171001-625A-00	上轴承上盖	Upper cover, top bearing	1	
13	5121003-625A-00	方向柱调整螺母	Adjust nut, steering stem	1	
14	9111003-501-00	方向卡垫	Washer	1	
15	5121005-625A-00	方向柱锁紧螺母	Lock nut, steering stem	1	



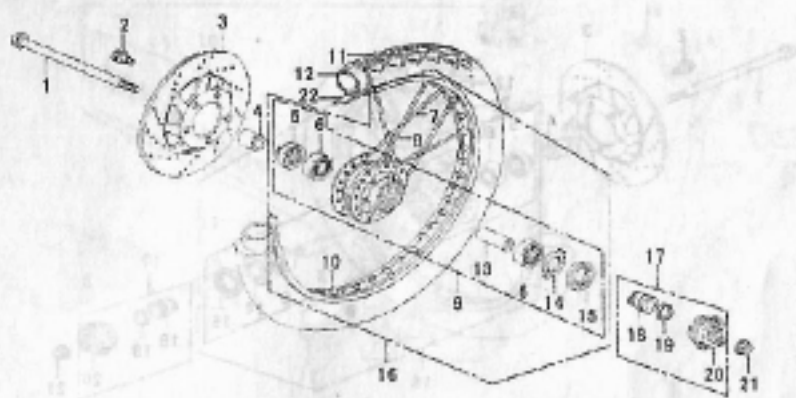
F-6 前挡泥板 Front Fender



序号 Ref. No.	零部件代号 Part No.	零部件名称	Description	数量 Quantity	备注 Remark
1	5310000-625B-00	前挡泥板	Front fender	1	
2	GB/T 5783-1986	螺栓 M6×20	Bolt M6×20	4	
3	5351001-501-00	护线环	Grommet, wire	1	

## F-7 前轮总成 Front Wheel

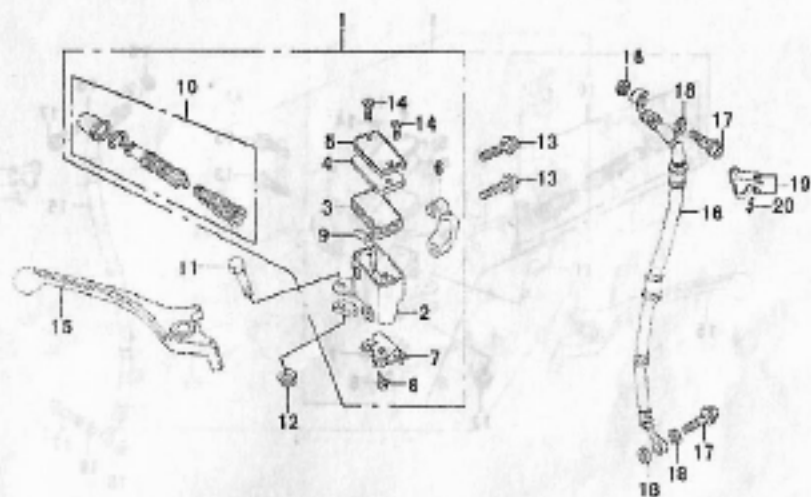
## F-7 前轮总成 Front Wheel



序号 Ref. No.	零部件代号 Part No.	零部件名称	Description	数量 Quantity	备注 Remark
1	5431001-625A-00	前轮轴	Axle, front	1	
2	5631002-625B-00	前制动盘螺栓	Bolt, front brake disk	4	
3	5631001-625B-00	前制动盘	Disk, front brake	1	
4	5431002-625A-00	前轮右衬套	Collar, front wheel, RH	1	
5	HG4-692-67	油封	Oil seal	1	
6	GB/T 276-1994	轴承	Bearing	2	
7	5463000-625A-10	前轮内辐条	Spoke set inside	18	
8	5464000-625A-10	前轮外辐条	Spoke set outside	18	
9	5462000-625A-10	前轮毂	Hub, front wheel	1	
10	5462002-625A-00	前轮圈	Rim, front wheel	1	
11	5470000-501-00	前轮外胎	Outer tire, front wheel	1	
12	5480000-501-00	前轮内胎	Inner tube, front wheel	1	
13	5421001-625B-10	前轮内衬套	Inner bush, front wheel	1	
14	5551004-625A-00	速度计驱动片	Retainer, tachometer	1	
15	5421002-625A-00	前轮左防尘圈	Dust seal	1	

F-8 前制动主泵 Front Brake Master Cylinder

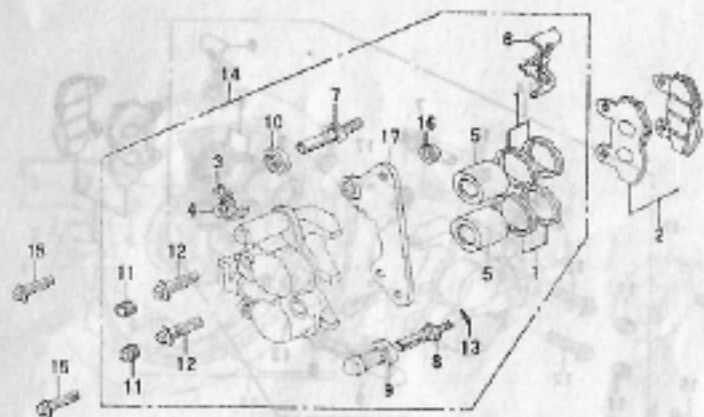
F-8 前制动主泵 Front Brake Master Cylinder



序号 Ref. No.	零部件代号 Part No.	零部件名称	Description	数量 Quantity	备注 Remark
1	5640000-625B-00	前制动主泵	Cylinder sub assy, front brake master	1	
2	5641001-625B-00	主泵体	Main cylinder body	1	
3	5641006-625B-00	油缸隔膜	Cylinder septum	1	
4	5641005-625B-00	密封垫	Gasket	1	
5	5641003-625B-00	主泵盖	Cap, master cylinder	1	
6	5641002-625B-00	主泵连接卡	Clip	1	
7	4752003-625B-00	前制动开关	Front brake switch	1	
8	GB/T 9074.1-88	螺钉 M4×12	Screw M4×12	1	
9	5641004-625B-00	保护片	Protecting sheet metal	1	
10	5642000-625B-00	前制动主柱塞组件	Main plunger assy	1	
11	4751002-625B-00	前制动手柄销轴	Bolt, handle lever pivot	1	
12	GB/T 6187.1-2000	螺母 M6	Nut M6	1	
13	GB/T 5787-2000	螺栓 M6×22	Bolt M6×22	2	
14	GB/T 819.1-2000	螺钉 M4×12	Screw M4×12	2	
15	4751001-625B-00	前制动手柄	Lever comp, front handle	1	

9 前制动分泵 Front Brake Caliper

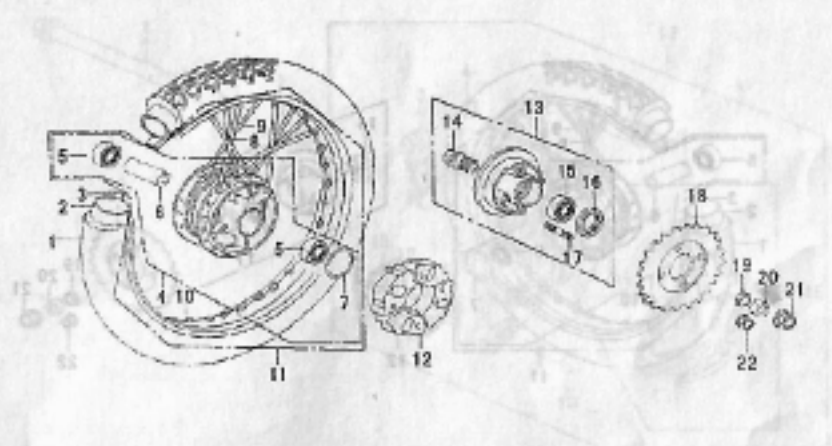
9 前制动分泵 Front Brake Caliper



序号 Ref. No.	零部件代号 Part No.	零部件名称 Description	数量 Quantity	备注 Remark
1	5651008-625B-00	活塞密封圈	2	
2	5651007-625B-00	前碟刹磨擦片	1	
3	5651009-625B-00	排气螺钉	1	
4	5651010-625B-00	排气螺帽	1	
5	5651007-625B-00	分泵活塞	2	
6	5652001-625B-00	油缸托架	1	
7	5651005-625B-00	销柱螺栓 (I)	1	
8	5651006-625B-00	销柱螺栓 (II)	1	
9	5651011-625B-00	销柱螺栓套	1	
10	5651012-625B-00	管套 B	1	
11	5651013-625B-00	销塞	2	
12	GB/T 5787-2000	螺栓 M10×32	2	
13	GB/T 93-1987	垫圈 10	1	
14	5650000-625B-00	前制动分泵	1	
15	GB/T 5787-2000	螺栓 M10×1.25	2	

F-10 后轮总成 Rear Wheel Assy

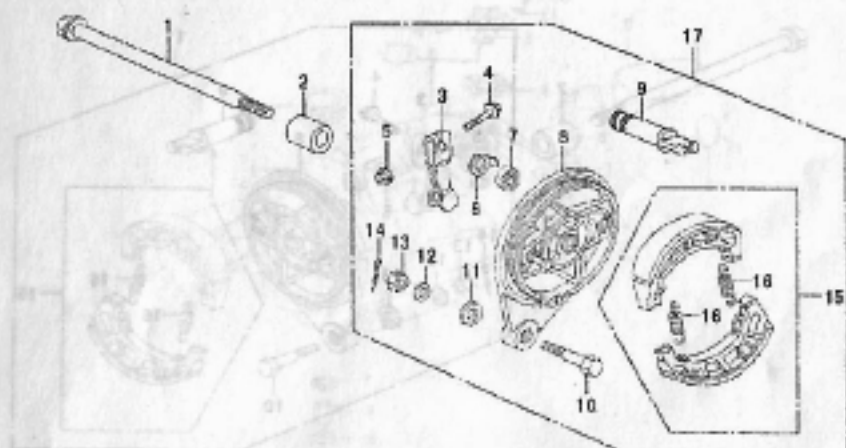
F-10 后轮总成 Rear Wheel Assy



序号 Ref. No.	零部件代号 Part No.	零部件名称 Description	数量 Quantity	备注 Remark
1	6470000-501-00	后轮外胎	1	
2	6480000-501-00	后轮内胎	1	
3	6481001-501-00	后轮垫带	1	
4	6461000-625A-10	后轮毂	1	
5	GB/T 276-1994	轴承	2	
6	6421001-625A-00	后轮内衬套	1	
7	GB 3452.1-1992	O形密封圈	1	
8	6464000-625A-10	后轮外辐条	18	
9	6463000-625A-10	后轮内辐条	18	
10	6462001-625A-10	后轮钢圈	1	
11	6460000-625A-10	后钢圈	1	
12	6441001-625A-00	后轮缓冲块	1	
13	2951000-625A-00	链轮缓冲体总成	1	
14	6441002-625A-00	链轮缓冲体内衬套	1	
15	GB/T 276-1994	轴承	1	

后制动器 Rear Brake

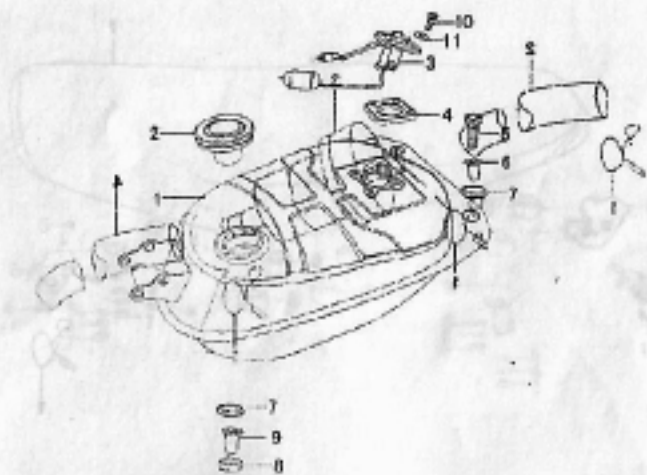
后制动器 Rear Brake



序号 Ref. No.	零部件代号 Part No.	零部件名称	Description	数量 Quantity	备注 Remark
1	6431001-625A-20	后轮轴	Axle, rear wheel	1	
2	6431002-625-00	后轮右衬套	Right bush, rear wheel	1	
3	6511003-625A-10	后制动臂	Rear brake arm	1	
4	GB/T 5787-2000	螺栓 M6×25	Bolt M6×25	1	
5	GB/T 6187.1-2000	螺母 M6	Nut M6	1	
6	6511005-625A-10	后制动指示牌	Rear brake, indicating board	1	
7	6511007-625A-10	后制动凸轮防尘圈	Dust seal, brake cam	1	
8	6511010-625A-10	后制动器盖	Panel comp, rear brake	1	
9	6511002-625A-010	后制动凸轮	Cam, rear brake	1	
10	9111025-625A-10	打孔台阶螺栓	Bolt M8×15	1	
11	6511008-625A-10	止动螺栓缓冲胶垫	rubbering	1	
12	GB/T 93-1987	垫圈 8	Washer 8	1	
13	GB/T 6170-2000	螺母 M8	Nut M8	1	
14	GB/T 91-2000	开口销 2×20	Split pin 2×20	1	
15	6511009-625A-10	后制动蹄块	Brake shoe set	2	

2 油箱总成 Fuel Tank

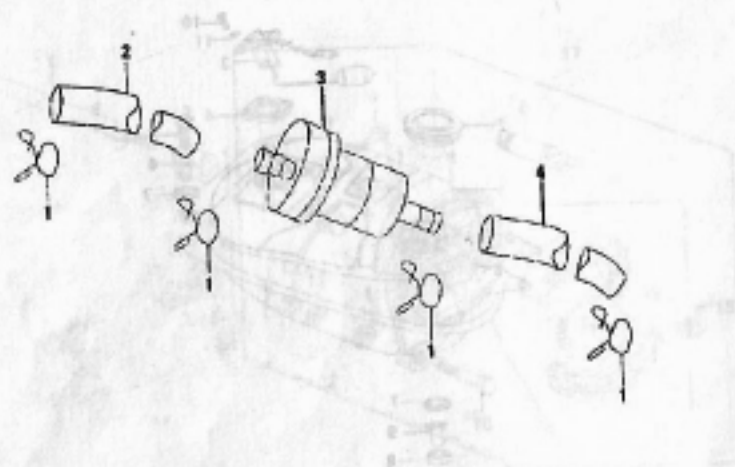
F-13 过滤器 Fuel Filter



序号 No.	零件代号 Part No.	零件名称 Part Name	Description	数量 Quantity	备注 Remarks
1	1661000-625A-00	油箱焊接组合	Fuel tank welding comp	1	
2	1651000-625A-00	油箱盖	Cap, fuel tank	1	
3	3781000-625A-00	燃油传感器	Sensor, fuel	1	
4	3781001-625A-00	燃油传感器密封圈	Packing, base	1	
5	GB/T 5783-2000	螺栓 M6x20	Bolt M6x20	2	
6	9111001-625A-00	翻边衬套 $\Phi 6 \times \Phi 20 \times 10$	Bush $\Phi 6 \times \Phi 20 \times 10$	2	
7	1681007-625A-00	油箱后安装胶圈	Rear installing washer	3	
8	GB/T 6187-1986	螺母 M8	Nut M8	1	
9	9111001-625A-00	翻边衬套 $\Phi 8 \times \Phi 23 \times 10$	Bush $\Phi 8 \times \Phi 23 \times 10$	1	
10	GB/T 5783-2000	螺栓 M5x16	Bolt M5x16	4	
11	GB/T 96-1985	垫圈 5	Washer 5	4	

... 1  
... 2  
... 3  
... 4  
... 6  
... 7  
... 9  
... 11  
... 13  
... 14  
... 15  
... 16  
... 18  
... 19  
... 20

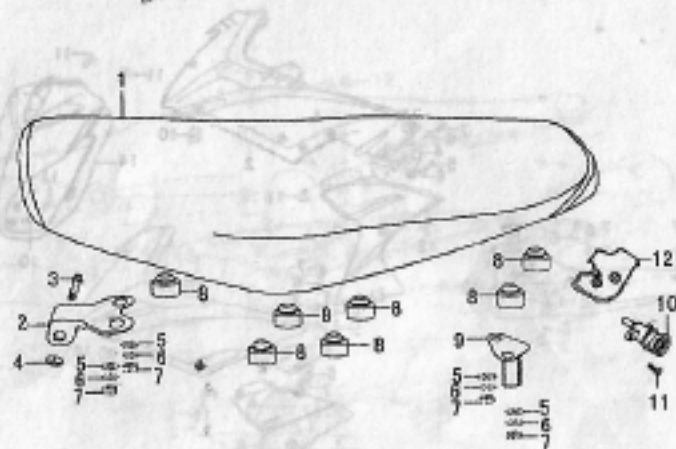
# F-13 过滤器 Fuel Filter



序号 Ref. No.	零部件代号 Part No.	零部件名称	Description	数量 Quantity	备注 Remark
1	1693004-625B-00	油管卡	Clip, Fuel Hose	4	
2	1693001-625B-00	油管(I)	Fuel Hose No.1	2	
3	1692000-501-10	过滤器	Filter	1	
4	1693002-625B-00	油管(II)	Fuel Hose No.2	1	



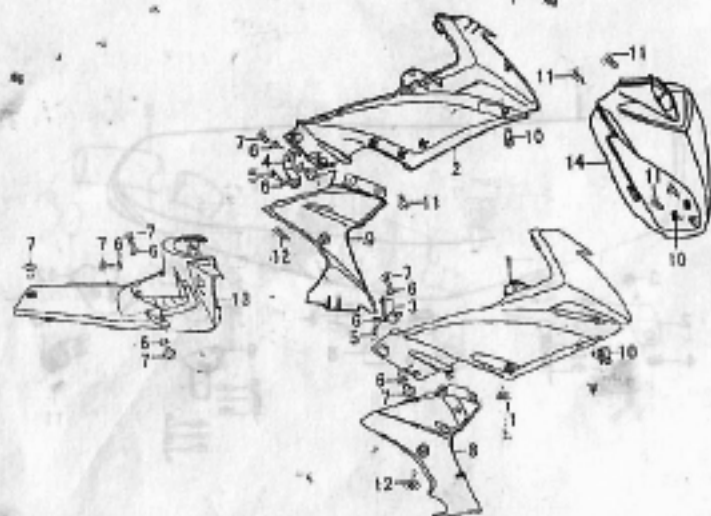
座垫 Seat



号 No.	零部件代号 Part No.	零部件名称	Description	数量 Quantity	备注 Remark
1	4410000-625A-00	座垫	Seat cushion	1	
2	4421002-625A-00	座垫前连接板	Hinge, seat	1	
3	4421008-625A-00	座垫前连接板销轴	Dowel, front plate	1	
4	GB/T 6170-2000	螺母 M6	Nut M6	1	
5	4421016-625A-00	座垫前连接板衬垫	Plate, seat hinge setting	4	
6	GB/T 96-1985	垫圈 5	Washer 5	4	
7	GB/T 6170-2000	螺母 M5	Nut M5	4	
8	4421009-625A-00	座垫减震垫	Rubber, seat assy	7	
9	4831001-625A-00	座垫锁支架	Bracket, lock seat	1	
10	4830000-625A-00	座垫锁	Lock, seat	1	
11	GB/T 5783-2000	螺栓 M6×16	Bolt M6×16	1	
12	4832000-G625A-00	座垫锁座	Seat lock base	1	

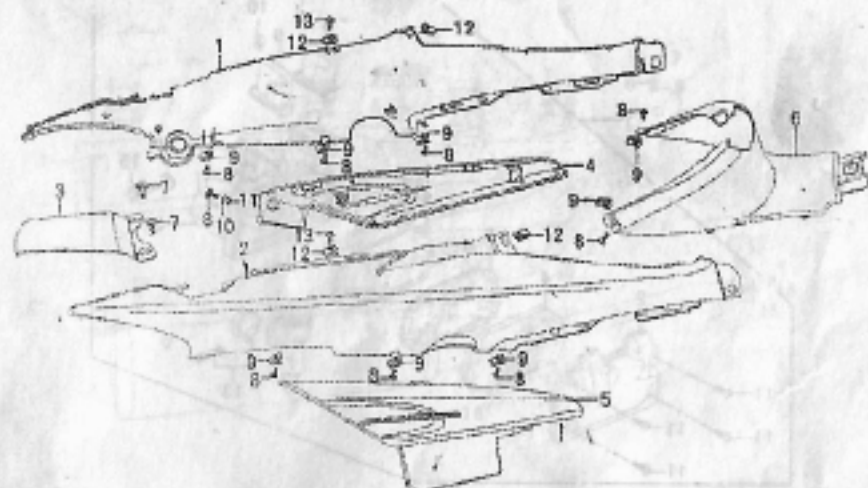
.. 1  
 .. 2  
 .. 3  
 .. 4  
 .. 6  
 .. 7  
 .. 9  
 .. 11  
 .. 13  
 .. 14  
 .. 15  
 .. 16  
 .. 18  
 .. 19  
 .. 20

# F-15 护板 Leg Shield



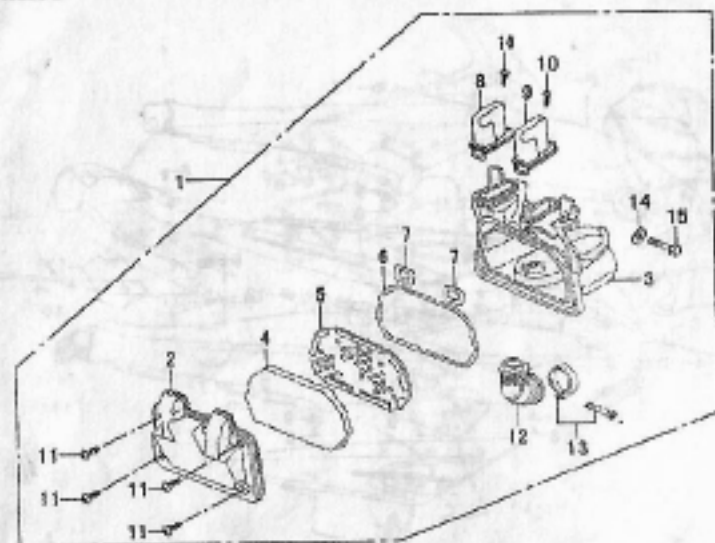
序号 Ref. No.	零部件代号 Part No.	零部件名称	Description	数量 Quantity	备注 Remark
1	4362002-625B-00	右挡风板	Shield ,Rt,Leg	1	
2	4362003-625B-00	左挡风板	Shield ,Lt,Leg	1	
3	4111026-625B-10	右挡风板支架	Bracket, Fr-Rt wind shield	1	
4	4111027-625B-10	左挡风板支架	Bracket, Fr-Lt wind shield	1	
5	GB/T 5783-2000	螺栓 M6×16	Bolt M6×16	2	
6	GB/T 96-1985	垫圈 6	Washer 6	9	
7	9111011-625B-00	十字大扁头螺栓 M6×16	Bolt M6×16	8	
8	4362005-625B-00	右导流罩	Guide Cover,RH	1	
9	4362004-625B-00	左导流罩	Guide Cover,LH	1	
10	9111002-625B-00	簧片螺母 M5	Nut M5	4	
11	GB/T 845-1985	自攻螺钉 ST4.8×16	Self-tapped screw ST4.8×16	10	
12	9111014-625B-00	十字带垫螺栓 M5×16	Screw M5×16	2	
13	4364001-625B-00	中护板前体	Front section,mid shield	1	
14	4322001-625B-00	前面罩	Hood, headlight	1	

5后围板 Rear Cover



序号 No.	零部件代号 Part No.	零部件名称 Description	数量 Quantity	备注 Remark
1	4373001-625B-00	左后围板	1	
2	4372001-625B-00	右后围板	1	
3	4374001-625B-00	后中连接板	1	
4	4341004-625B-00	左侧盖	1	
5	4331027-625B-00	右侧盖	1	
6	4364002-625B-00	中护板后体	1	
7	9111011-625B-00	十字大扁头螺栓 M6×16	2	
8	GB/T 845-1985	十字自攻螺钉 ST4.8×16	10	
9	9111006-625B-00	自攻卡子 ST4.2	10	
10	GB/T 97.1-1985	垫圈 5	2	
11	GB/T 96-1985	垫圈 5	2	
12	ZBT31004-87	簧片螺母 M5	6	
13	9111014-625B-00	十字带垫螺栓 M5×16	6	

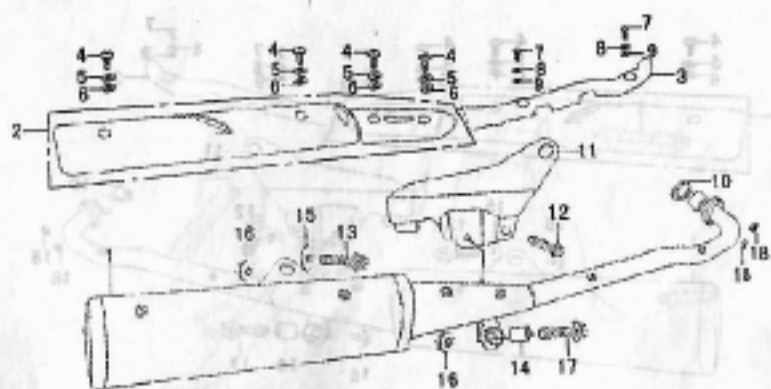
# F-17 空气滤清器总成 Air Cleaner



序号 Ref. No.	零部件代号 Part No.	零部件名称	Description	数量 Quantity	备注 Remark
1	1710000-625B-10	空气滤清器总成	Air cleaner assembly	1	
2	1711001-625B-10	空气滤清器盖	Cap, cleaner case	1	
3	1714001-625B-10	空气滤清器壳体	Case air cleaner	1	
4	1712001-625B-10	空气滤清器滤芯	Filter element	1	
5	1715001-625B-10	空气滤清器滤网	Air cleaner element assembly	1	
6	1711004-625B-10	空气滤清器密封垫 A	O-ring air cleaner A	1	
7	1711010-625B-10	空气滤清器密封垫 B	O-ring air cleaner B	2	
8	1711011-625B-10	右排气口帽	Cap, exhaust, RH	1	
9	1711012-625B-10	左排气口帽	Cap, exhaust, LH	1	
10	GB/T 845-1985	自攻螺钉 ST4.2×16	Self-tapped screw ST4.2×16	2	
11	GB/T 845-1985	自攻螺钉 ST4.8×20	Self-tapped screw ST4.2×20	4	
12	1711002-625B-10	空气滤清器连接管	Joint, air cleaner	1	
13	1713000-625B-10	空气滤清器卡箍	Clamp	1	
14	GB/T 96-1985	垫圈 6	Washer 6	2	
15	GB/T 5787-2000	螺栓 M6×12	Bolt M6×12	2	

消声器总成 Exhaust Muffler

F-18 消声器总成 Exhaust Muffler



号 No.	零部件代号 Part No.	零部件名称	Description	数量 Quantity	备注 Remark
1	1830000-625B-20	消声器	Muffler	1	
2	1861000-625B-20	消声器护板	Guard, muffler	1	
3	1861003-625B-20	排气管护罩	Cover, exhaust pipe	1	
4	9111013-625B-20	十字小扁头螺钉 M6×16	Screw M6×16	4	
5	GB/T 93-1987	垫圈 6	Washer 6	4	
6	GB/T 97.1-1985	垫圈 6	Washer 6	4	
7	GB/T 818-2000	螺钉 M5×12	Screw M5×12	2	
8	GB/T 93-1987	垫圈 5	Washer 5	2	
9	GB/T 97.1-1985	垫圈 5	Washer 5	2	
10	1811001-625B-00	排气口密封垫	Gasket, exhaust pipe	1	
11	1871002-625B-00	右挂耳	Suspension loop	1	
12	GB/T 5787-2000	螺栓 M10×1.25×20	Bolt M10×1.25×20	1	
13	GB/T 5787-2000	螺栓 M8×32	Bolt M8×32	1	
14	1861005-625B-00	消声器后安装减振垫	Rear installing damping set	1	
15	9111002-625B-00	大平垫 Φ8×Φ26×2	Washer Φ8×Φ26×2	1	

... 1

... 2

... 3

... 4

... 6

... 7

... 9

...11

...13

...14

...15

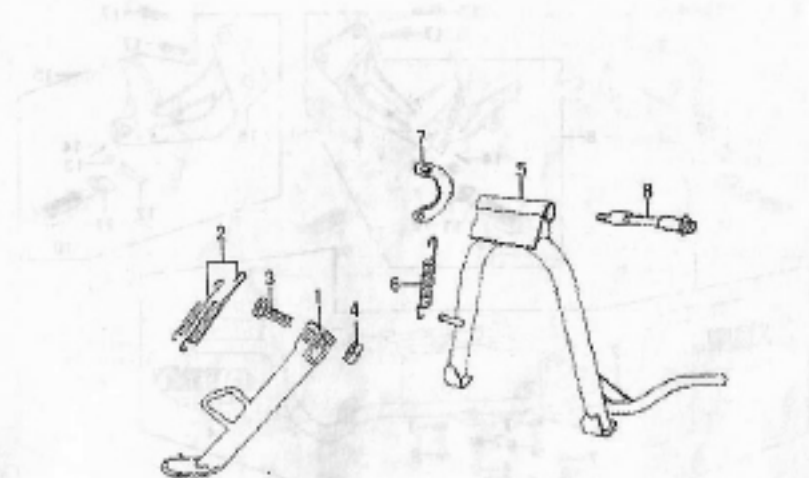
...16

...18

...19

...20

支架 Stand

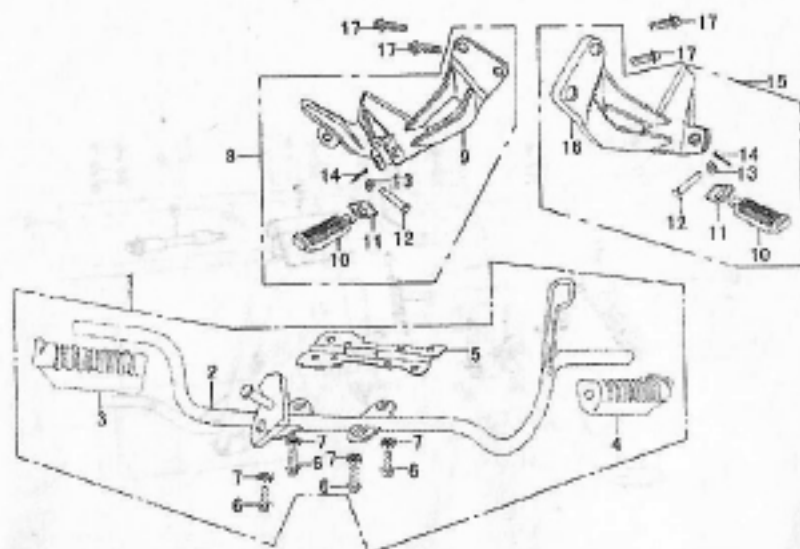


号 No.	零部件代号 Part No.	零部件名称	Description	数量 Quantity	备注 Remark
1	4230000-625A-00	侧支架	Prop stand	1	
2	4231001-625A-00	侧支架弹簧	Spring, prop stand	2	
3	4231002-625A-00	侧支架螺栓	Bolt, prop stand	1	
4	GB/T 6170-2000	螺母 M8	Nut M8	1	
5	4210000-625A-00	主支架	Stand, main	1	
6	4221002-625A-20	主支架弹簧	Spring, main stand	1	
7	4221006-502-00	弹簧挂板	Plate, spring	1	
8	4221001-625A-00	主支架轴	Shaft, main stand	1	

... 1  
... 2  
... 3  
... 4  
... 6  
... 7  
... 9  
... 11  
... 13  
... 14  
... 15  
... 16  
... 18  
... 19  
... 20

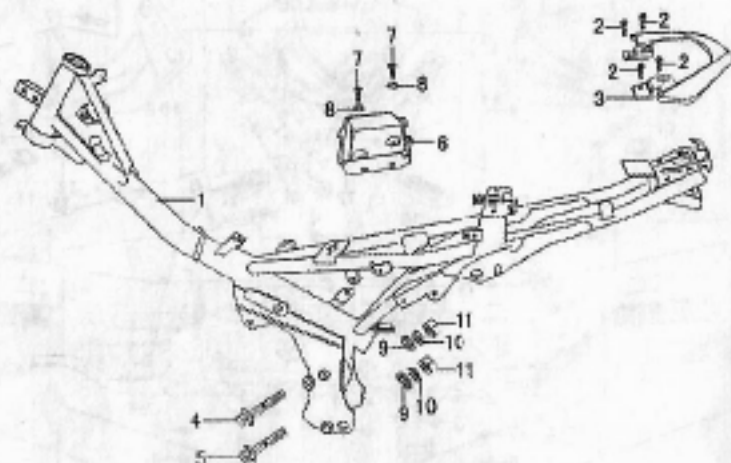
## F-20 搁脚组合 Footrest

Dasi2 架支 01-1



序号 Ref. No.	零部件代号 Part No.	零部件名称	Description	数量 Quantity	备注 Remark
1	4260000-625B-00	前搁脚组合	Footrest assembly, front	1	
2	4261006-625B-00	前搁脚支架	Bar, front footrest	1	
3	4261009-625B-00	前右搁脚胶套	Boot, front footrest, RH	1	
4	4262005-625B-00	前左搁脚胶套	Boot, front footrest, LH	1	
5	4261020-625B-00	前搁脚连接板	Between	1	
6	GB/T 5787-2000	螺栓 M8×20	Bolt M8×20	4	
7	GB/T 93-1987	弹垫 8	Washer 8	4	
8	4274000-625A-10	后右搁脚组合	Rear step comp. RH	1	
9	4275001-625A-10	后右搁脚支架	Stay, rear footrest, RH	1	
10	4274006-625A-10	后搁脚胶套	Boot, rear footrest	2	
11	4274002-625A-10	后搁脚胶套档块	Plate, boot, rear footrest	2	
12	4274008-625A-10	后搁脚连接销	Pin, pillion step	2	
13	GB/T 97.3-2000	垫圈 5	Washer 5	2	
14	GB/T 91-1986	开口销 2.0×15	Pin 2.0×15	2	
15	4271000-625A-10	后左搁脚组合	Rear step comp. LH	1	

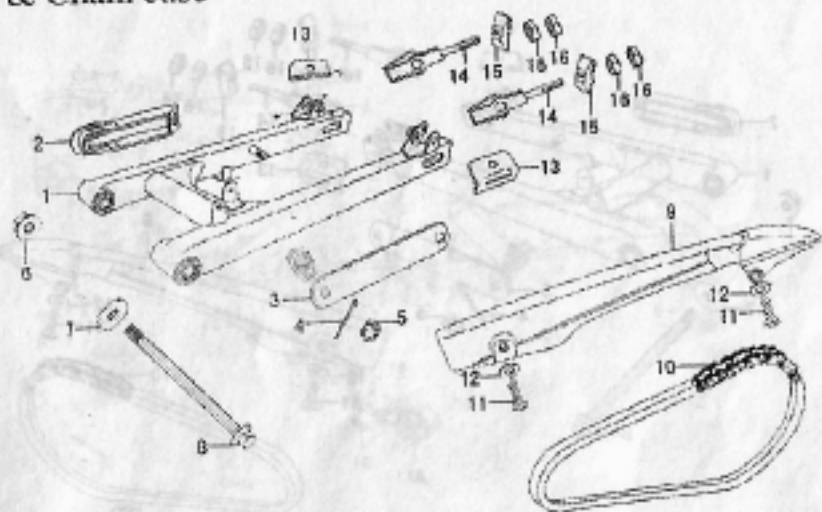
# F-21 车架 Frame Body



序号 Ref. No.	零部件代号 Part No.	零部件名称	Description	数量 Quantity	备注 Remark
1	4110000-626B-00	车架焊接总成	Weld assy.frame	1	
2	GB/T 5787-2000	螺栓 M6×20	Bolt M6×20	4	
3	4546001-625A-00	手扶手	Rear armrest	1	
4	GB/T 5782-2000	螺栓 M8×115	Bolt M8×115	1	
5	GB/T 5782-2000	螺栓 M8×105	Bolt M8×105	1	
6	3151008-625B-00	蓄电池盒	Accumulator board	1	
7	GB/T 5783-2000	螺栓 M6×16	Bolt M6×16	2	
8	GB/T 96-1986	垫圈 6	Washer 6	2	
9	GB/T 97.1-1985	垫圈 8	Washer 8	2	
10	GB/T 93-1987	弹簧垫圈 8	Washer 8	2	
11	GB/T 6170-2000	螺母 M8	N.t M8	2	

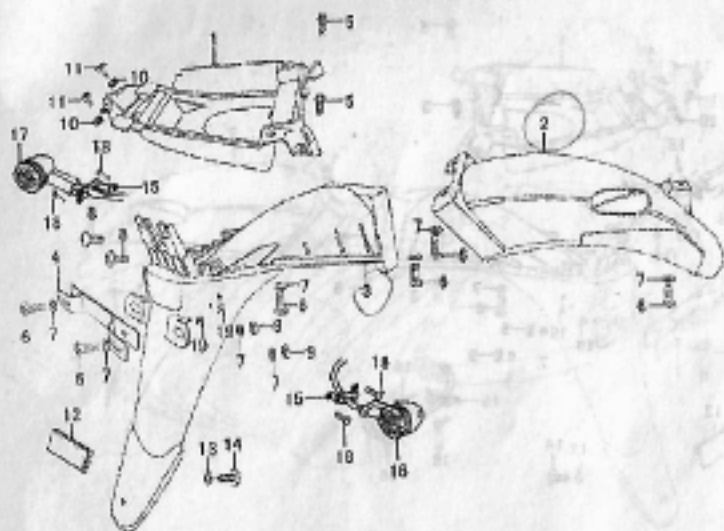


2 平叉, 链盒 Rear Fork & Chain case



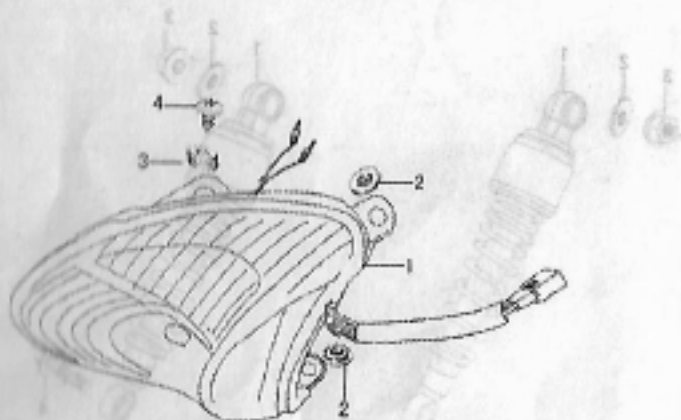
序号 Part No.	零部件代号 Part No.	零部件名称	Description	数量 Quantity	备注 Remark
1	6110000-625A-00	平叉焊接组合	Rear fork, welding assy.	1	
2	6121006-625A-00	链条护卡	Chain guide	1	
3	6121007-625A-00	后制动限位杆	Limit bar, rear brake	1	
4	GB/T 91-2000	开口销 2.0×16	Split pin 2.0×16	1	
5	GB/T 6178-1986	1型六角开槽螺母 M8	Nut M8	1	
6	GB/T 6187-1986	螺母 M12×1.25	Nut M12×1.25	1	
7	9111002-625A-00	大平垫 12	Washer 12	1	
8	6121004-625B-00	平叉轴	Rear fork shaft	1	
9	6131001-625A-20	链盒	Chain case	1	
10	2970000-606-00	链条	Chain, drive	1	
11	GB/T 5783-2000	螺栓 M6×10	Bolt M6×10	2	
12	GB/T 96-1985	垫圈 6	Washer 6	2	
13	6141004-625A-20	链条调节器标尺	Adjuster staff gauge	2	
14	6141001-625A-20	链条调节器	Chain adjuster	2	
15	6141002-625A-20	链条调节器挡板	Adjuster baffle	2	

3 后挡泥板 Rear Fender



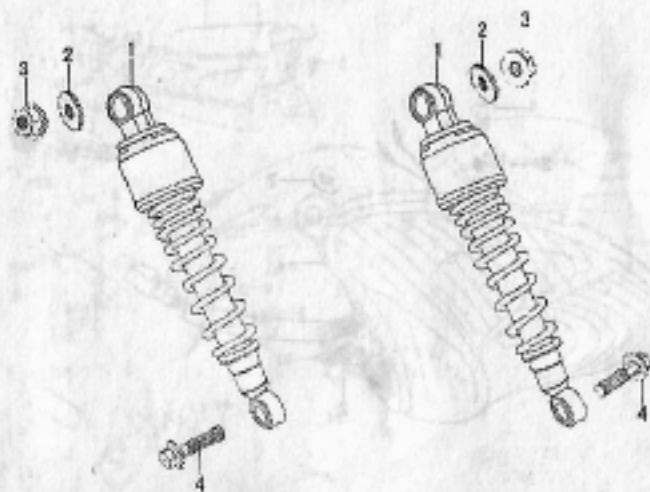
序号 f. No.	零部件代号 Part No.	零部件名称 Description	数量 Quantity	备注 Remark
1	4383000-625B-00	工具箱	1	
2	6311001-625B-00	后挡泥板前体	1	
3	6311002-625B-00	后挡泥板后体	1	
4	6371001-625B-00	后牌照支架	1	
5	GB/T 5787-2000	螺栓 M6×16	2	
6	GB/T 5783-2000	螺栓 M6×16	7	
7	GB/T 96-1985	垫圈 6	9	
8	9111011-625B-00	十字大扁头螺栓 M6×16	4	
9	GB/T 6170-2000	螺母 M6	2	
10	ZBT31004-87	薄片螺母 M5	2	
11	9111014-625B-00	十字带垫螺栓 M5×16	2	
12	3382000-625B-00	后反射器	1	
13	GB/T 96-1985	垫圈 5	1	
14	GB/T 845-1985	十字自攻螺钉 ST4.8×12	1	
15	3363009-607E-10	后转向灯支架	1	

... 1  
... 2  
... 3  
... 4  
... 6  
... 7  
... 9  
... 11  
... 13  
... 14  
... 15  
... 16  
... 18  
... 19  
... 20



序号 Part No.	零件代号 Part No.	零件名称 Description	数量 Quantity	备注 Remark
1	337000-625B-20	尾灯总成 Rear taillight assembly	1	
2	4361001-625B-00	尾灯胶圈 Taillight rubber seal	2	
3	4331002-625A-00	侧盖胶圈 (1) Side cover rubber seal (1)	2	
4	GB/T 845-1985	螺钉 ST4.8×16 Screw ST4.8×16	2	

后减震器 Rear Shock Absorber



序号 Ref. No.	零部件代号 Part No.	零部件名称	Description	数量 Quantity	备注 Remarks
1	6211000-625B-00	左后减震器	Rear shock absorber	2	
2	9111002-625B-00	大平垫 $\Phi 10 \times \Phi 26 \times 2$	Washer $\Phi 10 \times \Phi 26 \times 2$	1	
3	GB/T 6187-1986	螺母 M10 $\times$ 1.25	Nut M10 $\times$ 1.25	2	
4	GB/T 5787-2000	螺栓 M10 $\times$ 1.25 $\times$ 35	Bolt M10 $\times$ 1.25 $\times$ 35	2	